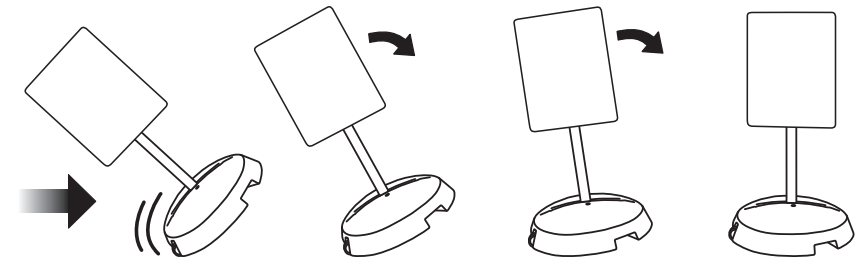
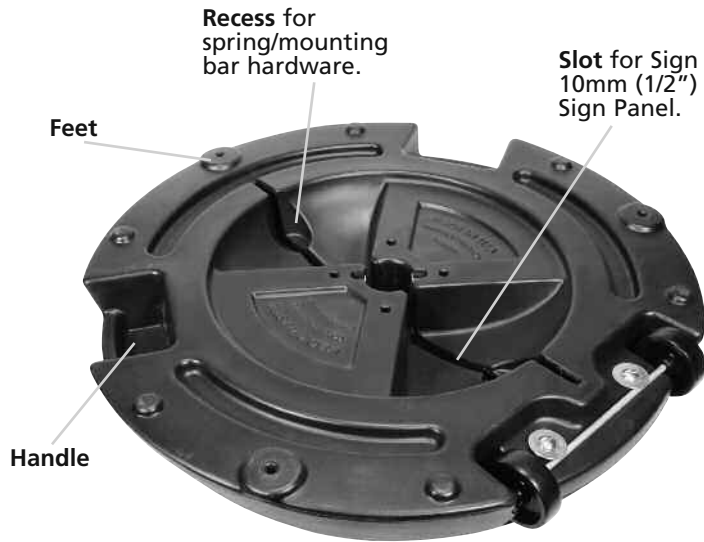
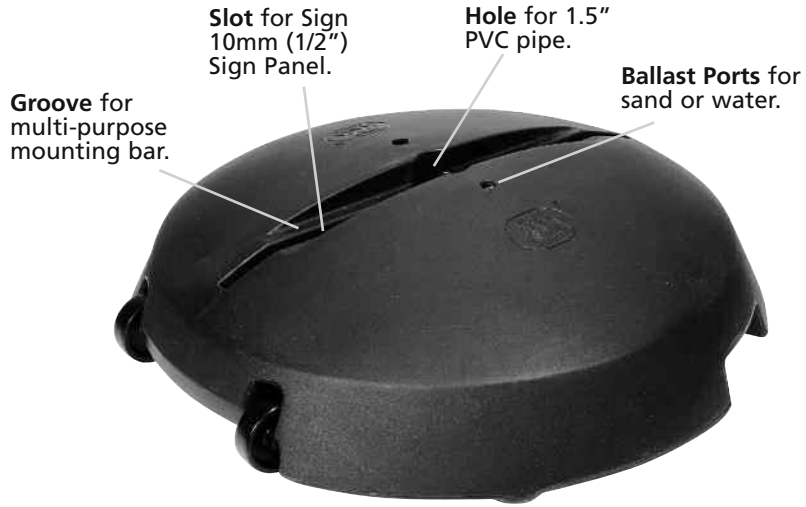


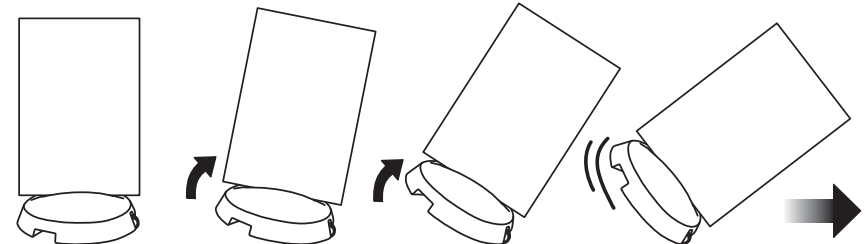
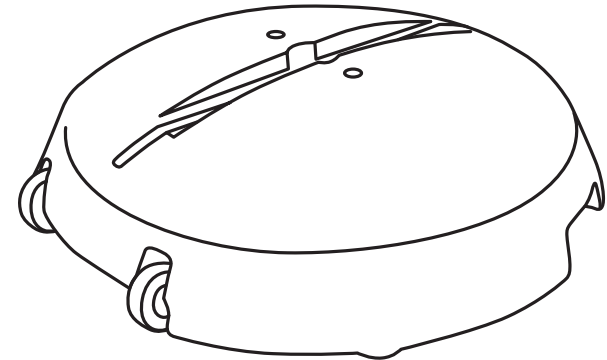
Wheelee™ Universal Sign Base



Wheelee™ Universal Sign Base

The Do Everything Rolling Sign Base

USER GUIDE



Wheelee™ Universal Sign Bases are designed for winds up to 20-30 mph depending on the type and size of the sign panel. In the event of higher winds bring sign inside or add more ballast through the Ballast Port.

Mfg. by **Joseph Struhl Company, Inc.**
 195 Atlantic Ave., PO Box N, Garden City Park, New York 11040
 1-800-552-0023 • 516 741-3660 • Fax 516 742-3617
www.magicmaster.com

ASSEMBLY

1. Install the 3 no-mar anti-slip feet by pushing **Feet** into holes on bottom of **Base** and pressing drive pin completely to lock foot into hole.
2. Remove the ballast port plugs and fill the **Wheelee™** with sand, gravel or water. If using water do not exceed 3 gallons. Add salt or RV antifreeze to prevent freezing.

WHEEL ATTACHMENT (Optional)

- Insert the **Brass Inserts** into the holes in the wheel cutout making sure the split end is pointed down and the top is flush with the top of the hole. You may have to tap the insert lightly to set it in the hole.
- Insert the **Wheels** onto **Axle** and place in recess making sure the wheels fit into wheel cutouts.
- Secure the **Axle** using the **Washers** and **Bolts**. **Do not over tighten.**

PANEL SIGN

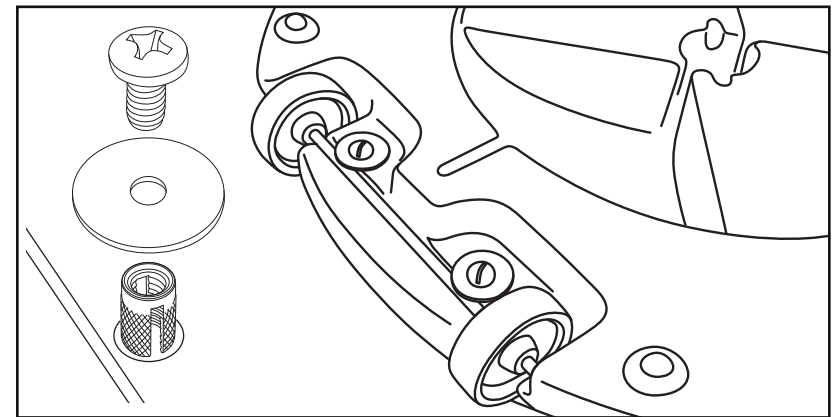
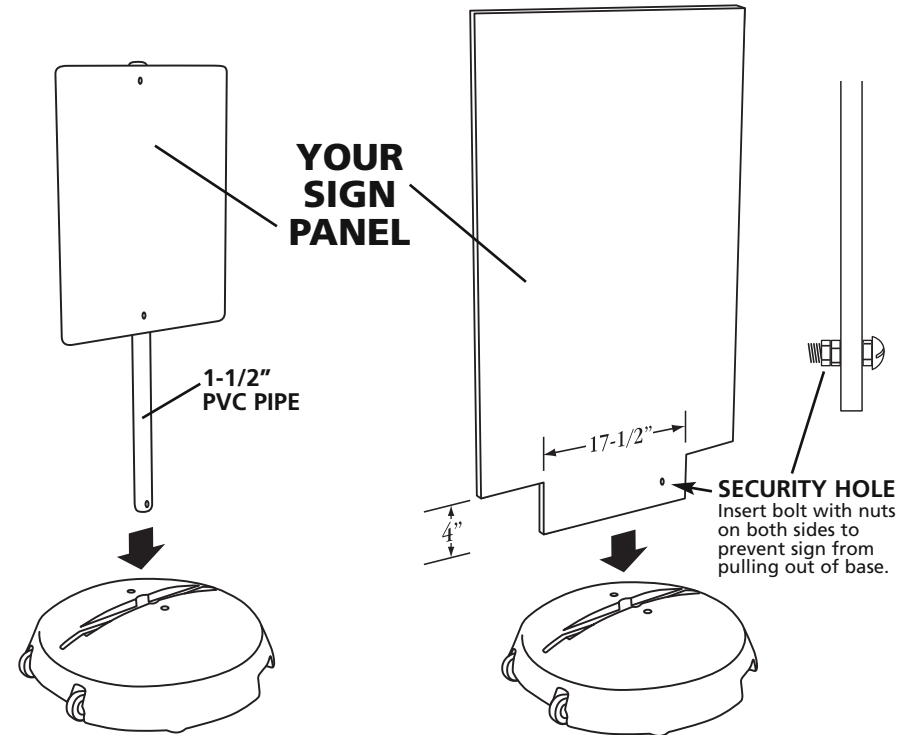
- The slot in the **Wheelee™** Universal Sign Base accepts 1/2" (10mm) thick material which should have a 4"x 17-1/2" tongue on the bottom to engage the **Slot**. This is easily done by cutting out the corners of the sign panel.
- If using 10mm corrugated plastic the flutes should run vertically (up/down) to prevent bending in heavy winds. 1/4" rods with a small bend can be inserted into the flutes for extra strength.
- If using sign face material thinner than 1/2" just add spacers for the 4"x 17-1/2" tongue plus 1" of the sign face (5"x 17-1/2"). Spacers should be glued, taped or screwed to the sign panel.
- For added impact the sign faces can be cut to a shape. This may require mirroring the image, but not the copy.
- Depending on material the **Wheelee™** Universal Sign Base can accommodate sign faces up to 28"x 44"/22"x 60".
- **For security, drill a 1/4" hole 6" from the center of the tongue and 2" up from the bottom, then insert a 1-1/2" long 1/4" bolt with nuts on both sides of the sign face. This will prevent the sign face from being pulled out.**

POLE SIGN

- The Hole in the **Wheelee™** Universal Sign Base accepts standard 1-1/2" PVC pipe, bought at any home center, hardware store or plumbing supply center, or pipe with a 2" outside diameter. The pipe can be painted for more visual appeal.
- Just push the pipe in from the top of the **Wheelee™** Universal Sign Base and twist – the tension will increase as the pipe is inserted. The pipe should touch the ground for maximum strength.
- If adding a sign face just drill 2 holes in the pipe and attach the sign face(s) with screws or bolts.
- The most common size sign is 14"x 22" and the normal height ranges from 48" to 60".

SPRING SIGN

- The **Wheelee™** Universal Sign Base has the provision for mounting 2 Spring assemblies (model SPG-ASSY), from the **Magic Master® Springer®** sidewalk sign, on 16" centers.
- Locate the recesses on the bottom of the **Wheelee™** Universal Sign Base, insert a 1/4"-20 x 3" truss head bolt with the fender washer supplied and screw into the bottom of the spring assembly making sure the sides of the spring assembly fit into the groove on the top and tighten securely.
- Use a 10mm corrugated plastic sign face, flutes long, up to 24"x 36" and slide the rods on the top of the spring assembly into the flutes of the sign face.



HELPFUL HINTS

- Decorate sign or banner before attachment to the **Wheelee™**.
- Keep design simple for maximum impact.
- To empty ballast (water, sand, etc.) remove Ballast Caps and pour out material. Replace Ballast Caps.
- Sand or small pea gravel works best for ballast and offers the most weight.